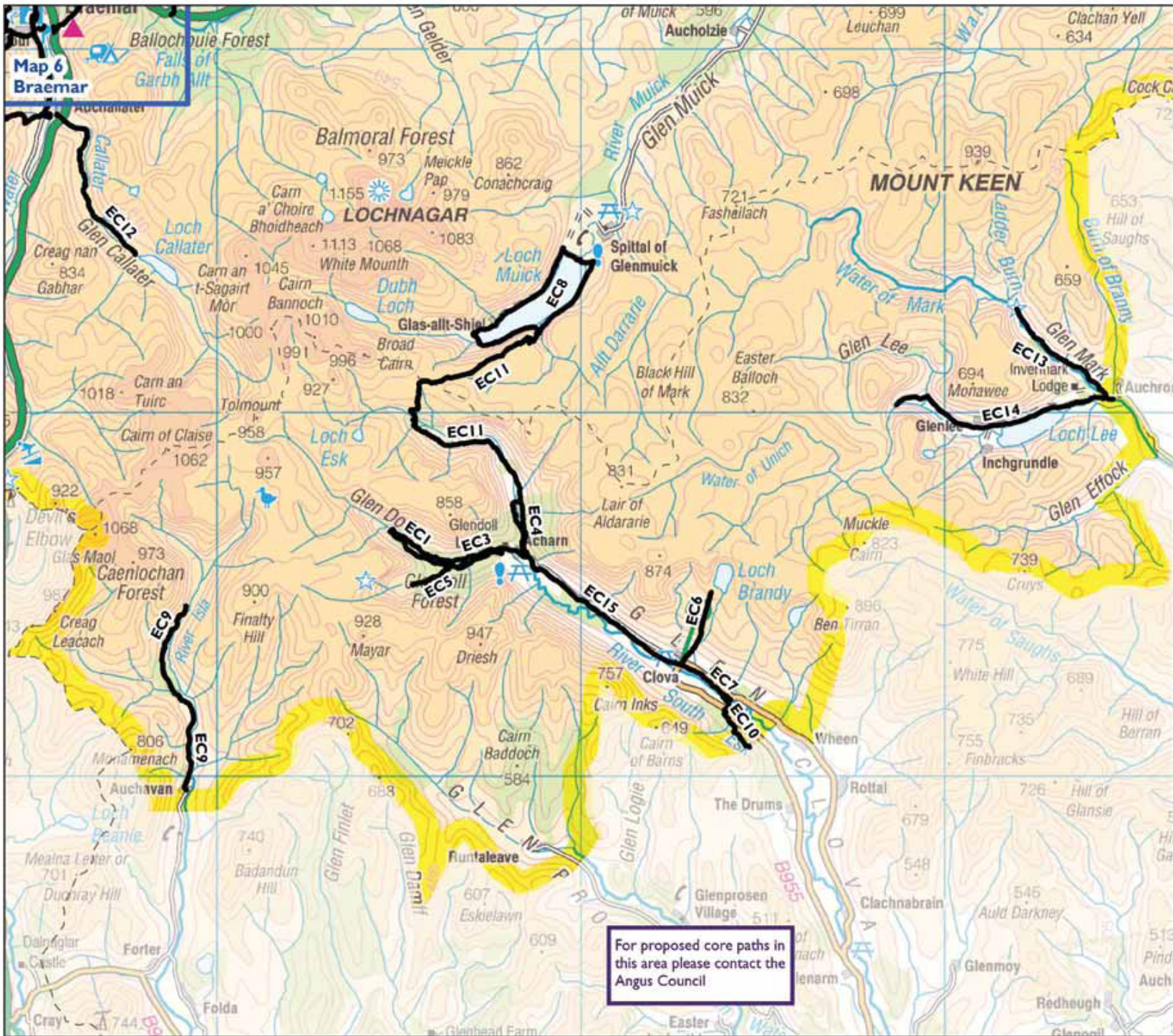


## Map 3

# Eastern Cairngorms

The map on the opposite page shows the proposed core paths network for the Eastern Cairngorms. The paths proposed within this area have been chosen as they best fit with the objectives of the Core Paths Plan and have been identified during the consultation process. In particular these paths will help people to enjoy the Park's natural heritage responsibly. The paths selected are popular for a range of activities including walking and cycling and they cater for a range of abilities, including a wheelchair accessible trail at Glen Doll. The paths in this area are particularly popular with visitors and there are links to the wider network and from the Eastern Cairngorms over into Upper Deeside.

<b>Eastern Cairngorms Proposed Core Paths</b>	
Path Ref No	Path Name/Description
EC1	Dounalt Walk
EC3	Forest Walk up White Water
EC4	South Esk Walk
EC5	Corrie Walk
EC6	Loch Brandy
EC7	Trout Loch Walk
EC8	Loch Muick
EC9	Glen Isla
EC10	Minister's Path
EC11	Bachnagairn
EC12	Glen Callater
EC13	Glen Mark
EC14	Glen Lee
EC15	Clova to Glen Doll



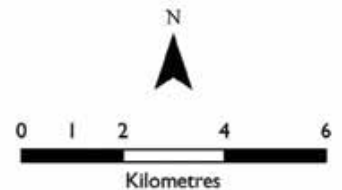
Draft Core Paths Plan

**Map 3**  
**EASTERN**  
**CAIRNGORMS**

Proposed Core Paths Network  
- for Consultation

**Map Legend**

- Cairngorms National Park
- Local Authority Area
- Proposed core path**
- Exists on ground
- Proposed new path
- ECI** Path Reference Number
- Inset map



This map is based upon Ordnance Survey material with the permission of Ordnance Survey on behalf of the Controller of Her Majesty's Stationery Office © Crown copyright. Unauthorised reproduction infringes Crown copyright and may lead to prosecution or civil proceedings. Cairngorms National Park Authority, 10004965, 2008.

This map must not be used for navigational purposes.

For proposed core paths in this area please contact the Angus Council